



WASHINGTON METROPOLITAN AREA TRANSIT AUTHORITY
600 Fifth Street, NW, Washington, DC 20001-2651

AMENDMENT OF SOLICITATION / MODIFICATION OF CONTRACT

WASHINGTON METROPOLITAN AREA TRANSIT AUTHORITY
600 Fifth Street, NW,
Washington, DC 20001-2651

Solicitation Number: IFB FQ17021/ER
Date of Issue: February 28, 2017
Due Date: March 22, 2017

AMENDMENT NO. 003
TO
INVITATION FOR BIDS
FOR
Electrical and Data Cabling Installation Phase II
Contract FQ17021

TO WHOM IT MAY CONCERN:

The IFB Bid Documents accompanying FQ17021/ER are hereby changed in part as Listed below:

1. Bidding and Contractual Documents – Volume I

DELETE

Section 00434, Bid Schedule

SUBSTITUTE

Section 00434, Bid Schedule

DESCRIPTION

**REPLACE ALL
(Please note a Material
Credit section is added
to Line 85 on the Bid
Schedule)**

2. MIR PIR - Volume 4

Volume 4 – Mezzanie Inspection
Reports Part 1b – Green/Yellow
Lines

Volume 4 – Mezzanie Inspection
Reports Part 1b – Green/Yellow
Lines

**REPLACE
MIR_E10_GREEN-
BELT_MZ080 station
Schematic with new
Schematic to reflect
new proposed duct
routing and materials**

3. There are no more changes.

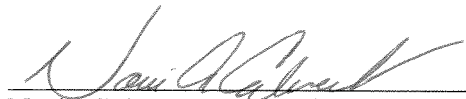
4. THE SOLICITATION PROVISION ENTITLED "SOLICITATION AMENDMENT" IS APPLICABLE TO THIS AMENDMENT. THE CHANGES SET FORTH ABOVE ARE HEREBY INCORPORATED INTO THE ABOVE CITED SOLICITATION. **THE HOUR AND DATE SPECIFIED FOR RECEIPT OF OFFERS IS 2:00 PM MARCH 22, 2017.**

5. Acknowledgement

Offerors are required to acknowledge receipt of this and all other amendment on the Bid Form in the space provided. Failure to acknowledge all amendments may cause the Bid to be considered non-responsive to the invitation, which would require rejection of the Bid.

.....

Issued By: _____


Norie Calvert, Contracting Officer
Office of Procurement and Materials

No.	Station/Mezzanine Name	Station ID	Mezz. ID	Labor / Product Category	Station Subtotal	Notes/Assumptions
001	METRO CENTER (NORTH MEZZANINE)	C01	035	Labor	\$ -	
				Product and Materials	\$ -	
				Station Subtotal	\$ -	
002	METRO CENTER (SOUTH MEZZANINE)	C01	052	Labor	\$ -	
				Product and Materials	\$ -	
				Station Subtotal	\$ -	
003	MCPHERSON SQUARE (EAST MEZZANINE)	C02	036	Labor	\$ -	
				Product and Materials	\$ -	
				Station Subtotal	\$ -	
004	MCPHERSON SQUARE (WEST MEZZANINE)	C02	037	Labor	\$ -	
				Product and Materials	\$ -	
				Station Subtotal	\$ -	
005	FARRAGUT WEST (EAST MEZZANINE)	C03	038	Labor	\$ -	
				Product and Materials	\$ -	
				Station Subtotal	\$ -	
006	FOGGY BOTTOM-GWU	C04	040	Labor	\$ -	
				Product and Materials	\$ -	
				Station Subtotal	\$ -	
007	ROSSLYN	C05	041	Labor	\$ -	
				Product and Materials	\$ -	
				Station Subtotal	\$ -	
008	ROSSLYN (SIDE/NEW ENTRANCE)	C05	113	Labor	\$ -	
				Product and Materials	\$ -	
				Station Subtotal	\$ -	

#AM2

#AM2

No.	Station/Mezzanine Name	Station ID	Mezz. ID	Labor / Product Category	Station Subtotal	Notes/Assumptions
009	ARLINGTON CEMETARY	C06	042	Labor	\$ -	
				Product and Materials	\$ -	
				Station Subtotal	\$ -	
#AM2 010	ARLINGTON CEMETARY (PLATFORM)	C06	042M	Labor	\$ -	Mini-Mezzanine
				Product and Materials	\$ -	
				Station Subtotal	\$ -	
#AM2 011	FEDERAL TRIANGLE	D01	053	Labor	\$ -	
				Product and Materials	\$ -	
				Station Subtotal	\$ -	
012	SMITHSONIAN (NORTH MEZZANINE)	D02	054	Labor	\$ -	
				Product and Materials	\$ -	
				Station Subtotal	\$ -	
013	SMITHSONIAN (SOUTH MEZZANINE)	D02	055	Labor	\$ -	
				Product and Materials	\$ -	
				Station Subtotal	\$ -	
#AM2 014	SMITHSONIAN (EASTBOUND PLATFORM)	D02	055M	Labor	\$ -	Mini-Mezzanine
				Product and Materials	\$ -	
				Station Subtotal	\$ -	
#AM2 015	L'ENFANT PLAZA (WEST MEZZANINE)	D03	056	Labor	\$ -	
				Product and Materials	\$ -	
				Station Subtotal	\$ -	
016	L'ENFANT PLAZA (EAST MEZZANINE)	D03	057	Labor	\$ -	
				Product and Materials	\$ -	
				Station Subtotal	\$ -	

No.	Station/Mezzanine Name	Station ID	Mezz. ID	Labor / Product Category	Station Subtotal	Notes/Assumptions
017	FEDERAL CENTER SW	D04	058	Labor	\$ -	
				Product and Materials	\$ -	
				Station Subtotal	\$ -	
018	CAPITOL SOUTH	D05	059	Labor	\$ -	
				Product and Materials	\$ -	
				Station Subtotal	\$ -	
019	EASTERN MARKET	D06	060	Labor	\$ -	
				Product and Materials	\$ -	
				Station Subtotal	\$ -	
020	POTOMAC AVENUE	D07	061	Labor	\$ -	
				Product and Materials	\$ -	
				Station Subtotal	\$ -	
021	STADIUM-ARMORY (SOUTH MEZZANINE)	D08	062	Labor	\$ -	
				Product and Materials	\$ -	
				Station Subtotal	\$ -	
022	STADIUM-ARMORY (NORTH MEZZANINE)	D06	063	Labor	\$ -	
				Product and Materials	\$ -	
				Station Subtotal	\$ -	
023	MINNESOTA AVENUE	D09	064	Labor	\$ -	
				Product and Materials	\$ -	
				Station Subtotal	\$ -	
024	DEANWOOD	D10	065	Labor	\$ -	
				Product and Materials	\$ -	
				Station Subtotal	\$ -	

No.	Station/Mezzanine Name	Station ID	Mezz. ID	Labor / Product Category	Station Subtotal	Notes/Assumptions
025	CHEVERLY	D11	066	Labor	\$ -	
				Product and Materials	\$ -	
				Station Subtotal	\$ -	
026	LANDOVER	D12	067	Labor	\$ -	
				Product and Materials	\$ -	
				Station Subtotal	\$ -	
027	NEW CARROLLTON	D13	068	Labor	\$ -	
				Product and Materials	\$ -	
				Station Subtotal	\$ -	
028	BENNING ROAD	G01	090	Labor	\$ -	
				Product and Materials	\$ -	
				Station Subtotal	\$ -	
029	CAPITOL HEIGHTS	G02	091	Labor	\$ -	
				Product and Materials	\$ -	
				Station Subtotal	\$ -	
030	ADDISON ROAD	G03	092	Labor	\$ -	
				Product and Materials	\$ -	
				Station Subtotal	\$ -	
031	MORGAN BOULEVARD	G04	110	Labor	\$ -	
				Product and Materials	\$ -	
				Station Subtotal	\$ -	
032	LARGO TOWN CENTER	G05	111	Labor	\$ -	
				Product and Materials	\$ -	
				Station Subtotal	\$ -	

No.	Station/Mezzanine Name	Station ID	Mezz. ID	Labor / Product Category	Station Subtotal	Notes/Assumptions
033	VAN DORN STREET	J02	094	Labor	\$ -	
				Product and Materials	\$ -	
				Station Subtotal	\$ -	
034	FRANCONIA-SPRINGFIELD	J03	095	Labor	\$ -	
				Product and Materials	\$ -	
				Station Subtotal	\$ -	
035	COURT HOUSE	K01	096	Labor	\$ -	
				Product and Materials	\$ -	
				Station Subtotal	\$ -	
036	CLARENDON	K02	097	Labor	\$ -	
				Product and Materials	\$ -	
				Station Subtotal	\$ -	
037	VIRGINIA SQUARE	K03	098	Labor	\$ -	
				Product and Materials	\$ -	
				Station Subtotal	\$ -	
038	EAST FALLS CHURCH	K05	100	Labor	\$ -	
				Product and Materials	\$ -	
				Station Subtotal	\$ -	
039	WEST FALLS CHURCH	K06	101	Labor	\$ -	
				Product and Materials	\$ -	
				Station Subtotal	\$ -	
040	DUNN LORING	K07	102	Labor	\$ -	
				Product and Materials	\$ -	
				Station Subtotal	\$ -	

No.	Station/Mezzanine Name	Station ID	Mezz. ID	Labor / Product Category	Station Subtotal	Notes/Assumptions
041	VIENNA	K08	103	Labor	\$ -	
				Product and Materials	\$ -	
				Station Subtotal	\$ -	
042	CRYSTAL CITY	C09	045	Labor	\$ -	
				Product and Materials	\$ -	
				Station Subtotal	\$ -	
043	REAGAN NATIONAL AIRPORT (SOUTH MEZZ)	C10	046	Labor	\$ -	
				Product and Materials	\$ -	
				Station Subtotal	\$ -	
044	REAGAN NATIONAL AIRPORT (NORTH MEZZ)	C10	093	Labor	\$ -	
				Product and Materials	\$ -	
				Station Subtotal	\$ -	
#AM2	045	C10	093M	Labor	\$ -	Mini-Mezzanine
Product and Materials				\$ -		
Station Subtotal				\$ -		
#AM2	046	C12	047	Labor	\$ -	
Product and Materials				\$ -		
Station Subtotal				\$ -		
047	KING STREET-OLD TOWN (SOUTH MEZZ)	C13	048	Labor	\$ -	
				Product and Materials	\$ -	
				Station Subtotal	\$ -	
#AM2	048	C13	048M	Labor	\$ -	Mini-Mezzanine
Product and Materials				\$ -		
Station Subtotal				\$ -		

#AM2

#AM2

No.	Station/Mezzanine Name	Station ID	Mezz. ID	Labor / Product Category	Station Subtotal	Notes/Assumptions
049	KING STREET-OLD TOWN (NORTH MEZZ)	C13	112	Labor	\$ -	
				Product and Materials	\$ -	
				Station Subtotal	\$ -	
050	HUNTINGTON (NORTH MEZZANINE)	C15	050	Labor	\$ -	
				Product and Materials	\$ -	
				Station Subtotal	\$ -	
051	HUNTINGTON (SOUTH MEZZANINE)	C15	051	Labor	\$ -	
				Product and Materials	\$ -	
				Station Subtotal	\$ -	
052	MOUNT VERNON SQUARE	E01	070	Labor	\$ -	
				Product and Materials	\$ -	
				Station Subtotal	\$ -	
053	SHAW-HOWARD U (SOUTH MEZZANINE)	E02	071	Labor	\$ -	
				Product and Materials	\$ -	
				Station Subtotal	\$ -	
054	SHAW-HOWARD U (NORTH MEZZANINE)	E02	072	Labor	\$ -	
				Product and Materials	\$ -	
				Station Subtotal	\$ -	
055	U STREET (EAST MEZZANINE)	E03	073	Labor	\$ -	
				Product and Materials	\$ -	
				Station Subtotal	\$ -	
056	U STREET (WEST MEZZANINE)	E03	074	Labor	\$ -	
				Product and Materials	\$ -	
				Station Subtotal	\$ -	

No.	Station/Mezzanine Name	Station ID	Mezz. ID	Labor / Product Category	Station Subtotal	Notes/Assumptions
057	GEORGIA AVENUE	E05	076	Labor	\$ -	
				Product and Materials	\$ -	
				Station Subtotal	\$ -	
058	WEST HYATTSVILLE	E07	077	Labor	\$ -	
				Product and Materials	\$ -	
				Station Subtotal	\$ -	
059	PRINCE GEORGE'S PLAZA	E08	078	Labor	\$ -	
				Product and Materials	\$ -	
				Station Subtotal	\$ -	
060	COLLEGE PARK	E09	079	Labor	\$ -	
				Product and Materials	\$ -	
				Station Subtotal	\$ -	
061	GREENBELT	E10	080	Labor	\$ -	
				Product and Materials	\$ -	
				Station Subtotal	\$ -	
062	ARCHIVES	F02	081	Labor	\$ -	
				Product and Materials	\$ -	
				Station Subtotal	\$ -	
063	L'ENFANT PLAZA (NORTH MEZZANINE)	F03	082	Labor	\$ -	
				Product and Materials	\$ -	
				Station Subtotal	\$ -	
064	WATERFRONT	F04	083	Labor	\$ -	
				Product and Materials	\$ -	
				Station Subtotal	\$ -	

No.	Station/Mezzanine Name	Station ID	Mezz. ID	Labor / Product Category	Station Subtotal	Notes/Assumptions
065	NAVY YARD-BALLPARK (WEST MEZZANINE)	F05	105	Labor	\$ -	
				Product and Materials	\$ -	
				Station Subtotal	\$ -	
066	ANACOSTIA (NORTH MEZZANINE)	F06	085	Labor	\$ -	
				Product and Materials	\$ -	
				Station Subtotal	\$ -	
067	ANACOSTIA (SOUTH MEZZANINE)	F06	106	Labor	\$ -	
				Product and Materials	\$ -	
				Station Subtotal	\$ -	
068	CONGRESS HEIGHTS	F07	086	Labor	\$ -	
				Product and Materials	\$ -	
				Station Subtotal	\$ -	
069	SOUTHERN AVENUE	F08	107	Labor	\$ -	
				Product and Materials	\$ -	
				Station Subtotal	\$ -	
070	NAYLOR ROAD	F09	087	Labor	\$ -	
				Product and Materials	\$ -	
				Station Subtotal	\$ -	
071	BRANCH AVENUE	F11	089	Labor	\$ -	
				Product and Materials	\$ -	
				Station Subtotal	\$ -	
072	METRO CENTER (WEST MEZZANINE)	A01	001	Labor	\$ -	
				Product and Materials	\$ -	
				Station Subtotal	\$ -	

No.	Station/Mezzanine Name	Station ID	Mezz. ID	Labor / Product Category	Station Subtotal	Notes/Assumptions	
073	FARRAGUT NORTH (NORTH MEZZANINE)	A02	004	Labor	\$ -		
				Product and Materials	\$ -		
				Station Subtotal	\$ -		
074	TENLEYTOWN-AU	A07	010	Labor	\$ -		
				Product and Materials	\$ -		
				Station Subtotal	\$ -		
#AM2 075	TENLEYTOWN-AU	A07	010M	Labor	\$ -	Mini-Mezzanine	#AM2
			Product and Materials	\$ -			
			Station Subtotal	\$ -			
#AM2 076	FRIENDSHIP HEIGHTS (NORTH MEZZANINE)	A08	011	Labor	\$ -		#AM2
			Product and Materials	\$ -			
			Station Subtotal	\$ -			
077	WHITE FLINT	A12	015	Labor	\$ -		
				Product and Materials	\$ -		
				Station Subtotal	\$ -		
#AM2 078	GALLERY PLACE EAST	B01	021M	Labor	\$ -	Mini-Mezzanine	#AM2
			Product and Materials	\$ -			
			Station Subtotal	\$ -			
079	JUDICIARY SQUARE (WEST MEZZANINE)	B02	022M	Labor	\$ -	Mini-Mezzanine	
				Product and Materials	\$ -		
				Station Subtotal	\$ -		
080	UNION STATION (NORTH MEZZANINE)	B03	025	Labor	\$ -		
				Product and Materials	\$ -		
				Station Subtotal	\$ -		

No.	Station/Mezzanine Name	Station ID	Mezz. ID	Labor / Product Category	Station Subtotal	Notes/Assumptions
081	TAKOMA	B07	029	Labor	\$ -	
				Product and Materials	\$ -	
				Station Subtotal	\$ -	
082	TAKOMA	B08	029M	Labor	\$ -	Mini-Mezzanine
				Product and Materials	\$ -	
				Station Subtotal	\$ -	
083	GLENMONT	B11	034	Labor	\$ -	
				Product and Materials	\$ -	
				Station Subtotal	\$ -	
TOTAL I					\$ -	
084	Various locations as needed for Task 9	N/A	N/A	Labor, Product, and Materials	\$ 40,000.00	
	Sample Prices for Task 9 (not included in total)					
	Two (2) failed cables	N/A	N/A	Labor, Product, and Materials	\$ -	
	100' cable run	N/A	N/A	Labor, Product, and Materials	\$ -	Sample line item not included in total
TOTAL II					\$ 40,000.00	
085				Material Credit	\$ -	
				Mobilization	\$ -	
				RRPL Insurance	\$ 17,100.00	
TOTAL III					\$ 17,100.00	
TOTAL (I+II+III)					\$ 57,100.00	Cost Proposal


#AM2

#AM2

#AM2

#AM2

Mezzanine Inspection Report				Revision 1
Date: 10/27/14	Station Name: E10 Greenbelt	Mezzanine #: 080	Completed By: Mike Butler	
Summary				
<p>It was not possible to complete any video scoping or pull string installation at this mezzanine. There were multiple collapses found in the faregate array and the power duct between Kiosk, Handhole 1, Handhole 2 and AFC Panel. In addition, there was also water intrusion evident in all ducts, including excessive muck build up that has contributed to multiple blockages throughout the ducts.</p> <p>Scanning was conducted to identify a new route for power between Kiosk and AFC Panel. Based on the scanning results, a new power duct is proposed between the Kiosk to Room C100. Before entering Room C100, the duct will change direction through a proposed handhole and then will transition to an overhead conduit through a second proposed handhole and new junction box. The conduit will continue overhead to the end of the hallway and pass through the end wall (by core drilling) to Room C106 before feeding into the AFC Panel.</p>				
Scoping of Faregate Array(s)				
Task	9	Yes/No	Notes	
Communications Duct – Upper Faregate Array (8-gates)				
Was video scoping completed for the entire duct run?		No		
Were pull strings installed at all faregates in the array?		No		
Were there any obstructions or blockages? Provide details of type and specific location.		Yes	Not possible due to water intrusion, muck build up, and collapsed duct at entry points.	
Is the duct at capacity? Provide additional details about the dimensions of ducts and number of wires.		N/A	3" walker duct.	
9				
Power Duct - Upper Faregate Array (8 gates)				
Was video scoping completed for the entire duct run?		No		
Were there any obstructions or blockages? Provide details of type and specific location.		Yes	Not possible due to water intrusion, muck build up, and collapsed duct at entry points.	
Is the duct at capacity? Provide additional details about the dimensions of ducts and number of wires.		N/A	6" walker duct.	

Scoping of Power Duct - Kiosk to AFC Panel		
Task	Yes/No	Notes
Kiosk to Handhole 1 (Distance: 40')		
Was video scoping completed for the entire duct / conduit run?	No	
Was pull string installed?	No	
Were there any obstructions or blockages? Provide details of type and specific location.	Yes	Not possible due to water intrusion, muck build up, and collapsed duct at entry points.
Is the duct / conduit at capacity? Provide additional details about the dimensions of duct / conduit and number of wires.	N/A	6" walker duct.
Handhole 1 to Handhole 2 (Distance: 17')		
Was video scoping completed for the entire duct / conduit run?	No	
Was pull string installed?	No	
Were there any obstructions or blockages? Provide details of type and specific location.	Yes	Not possible due to water intrusion, muck build up, and collapsed duct at entry points.
Is the duct / conduit at capacity? Provide additional details about the dimensions of duct / conduit and number of wires.	N/A	6" walker duct.
Handhole 2 to AFC Panel (Distance: 30')		
Was video scoping completed for the entire duct / conduit run?	No	
Was pull string installed?	No	
Were there any obstructions or blockages? Provide details of type and specific location.	Yes	Not possible due to water intrusion, muck build up, and collapsed duct at entry points.
Is the duct / conduit at capacity? Provide additional details about the dimensions of duct / conduit and number of wires.	N/A	6" walker duct.
Observations / Issues / Next Steps		
<p>The proposed power route between Kiosk and AFC Panel is 82', including 40' of proposed duct and 42' of proposed conduit.</p> <p>Refer to attached photos and drawings for additional information.</p>		
Sign Off		
	GFP Representative	WMATA PRGM
Name:	Mike Butler	
Signature:		
Date:	02/26/15	

#AM2

Photo #1 – Existing and Proposed Duct Route

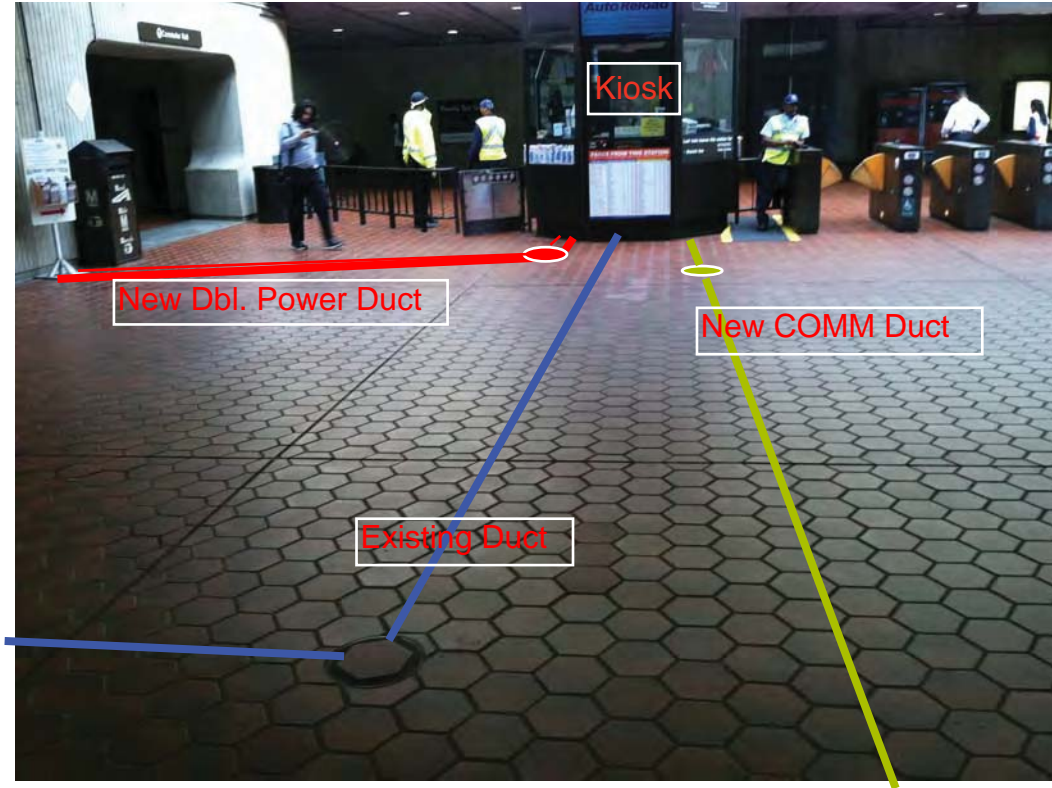
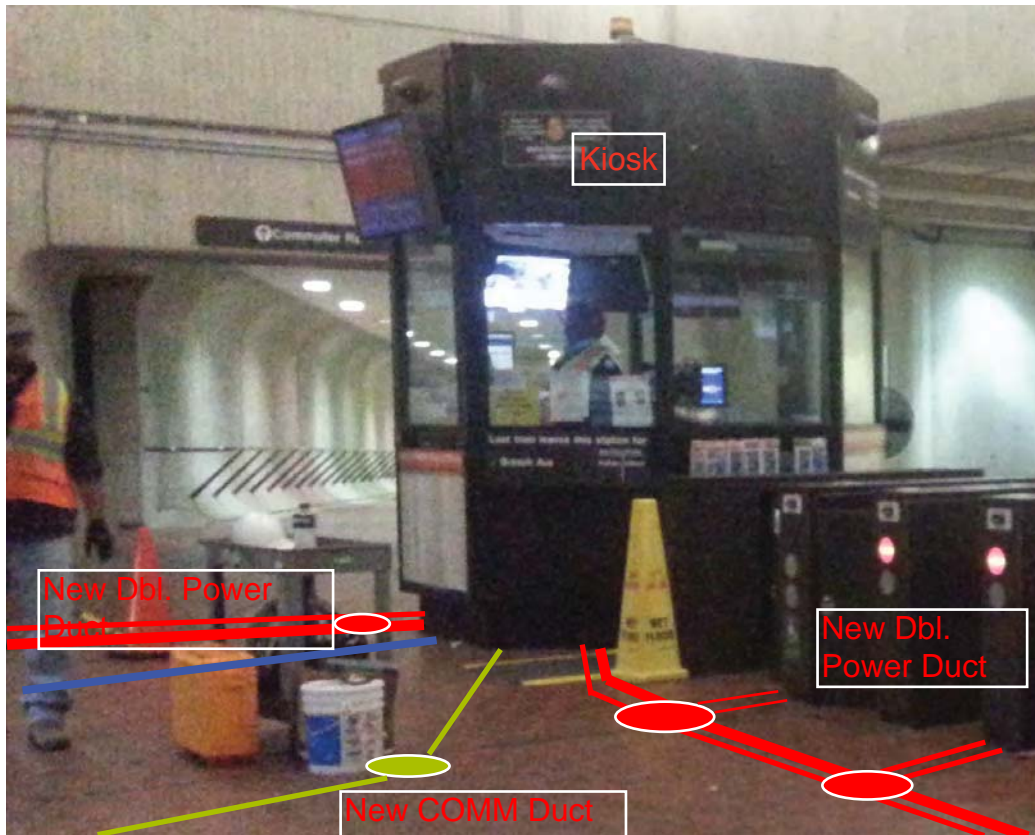


Photo #2 – Existing and Proposed Duct Route



#AM2

#AM2

Photo #3 – Existing and Proposed Duct Route



Photo #4 – Existing and Proposed Duct Route



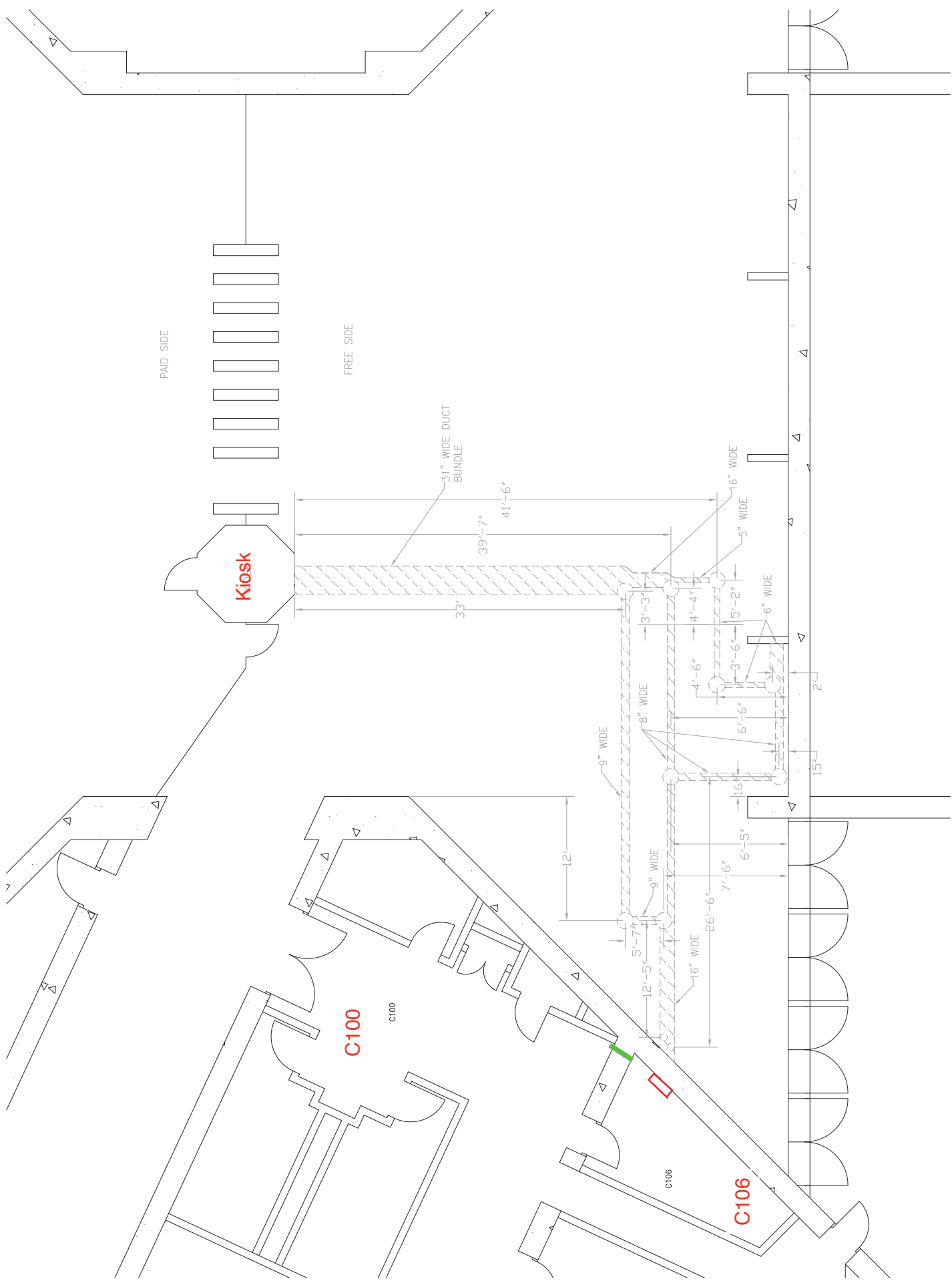
#AM2

#AM2 Photo #5 – Existing and Proposed Route in Room C106



Photo #6 – Condition of Existing Duct inside Kiosk

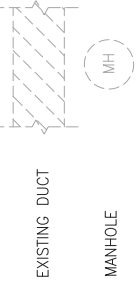




PLAN NOTES:

1. DIMENSIONS ARE IN FEET AND INCHES.
2. DIMENSIONS ARE FOR REFERENCE ONLY.
3. EXISTING IN-FLOOR DUCTS/CONDUITS WERE IDENTIFIED USING A PORTABLE GPR SCANNING DEVICE.
4. THE SCANNING COVERAGE IS LIMITED TO THE MEZZANINE FLOOR ONLY.
5. GPR SCANNING HAS THE FOLLOWING LIMITATIONS: (i) 12 INCHES VISIBLE SCANNING DEPTH; (ii) VISIBILITY BEYOND CONGESTED OR NEAR SURFACE REINFORCEMENT LAYERS; (iii) DETECTION OF PVC AND OTHER NON-METALLIC OBJECTS (V) DETERMINATION OF SIZE AND EXTENTS OF SUBSURFACE ANOMALIES SUCH AS SLAB VOIDS OR REBAR SIZES; AND (v) VISIBILITY WHEN VARIABLE MOISTURE CONDITIONS EXIST IN THE SUBSTRATE.

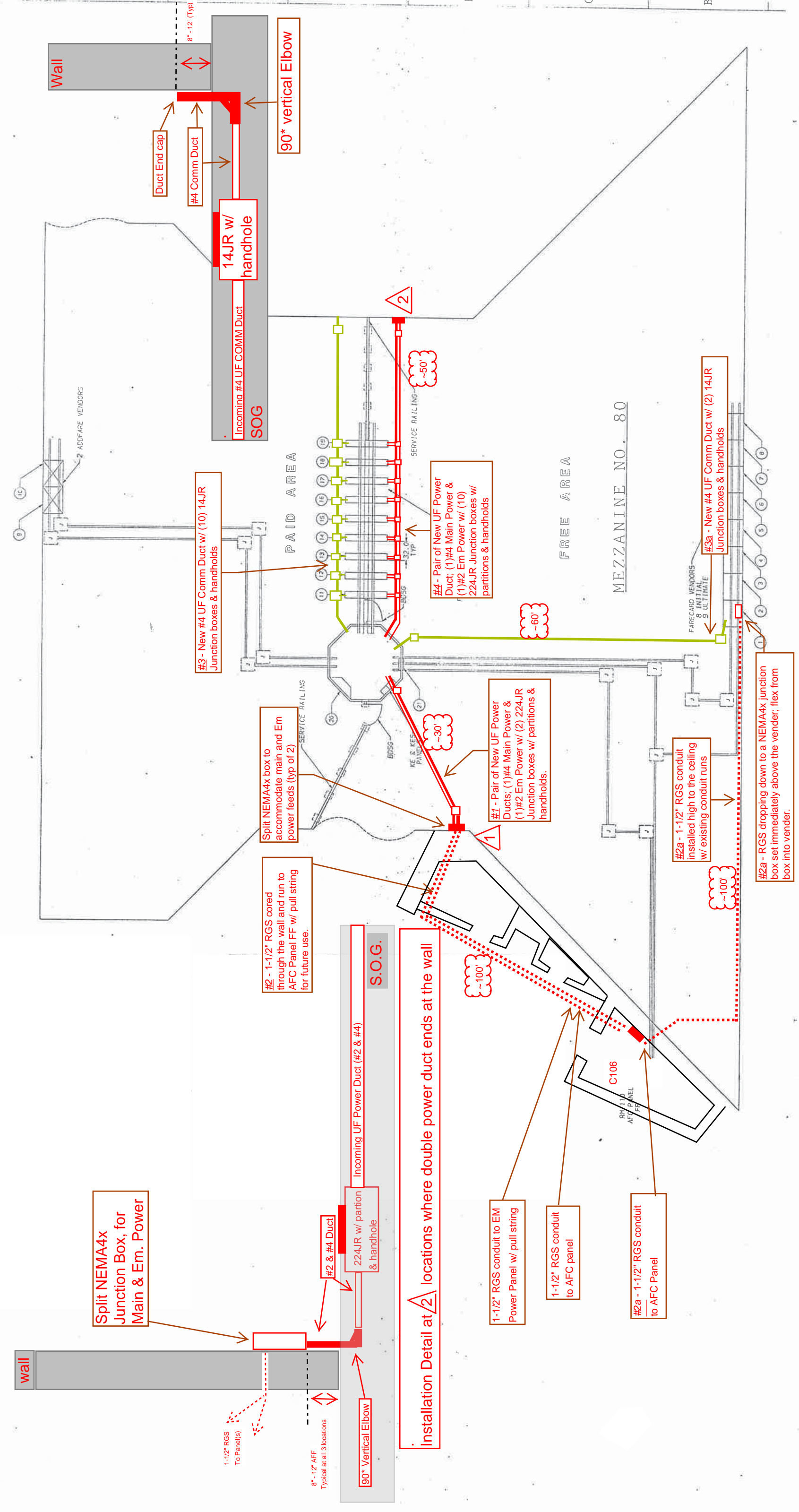
LEGEND:



E-100 GREENBELT STATION
SCALE: NOT TO SCALE

DESIGNED C. LOOSE DATE 11-14	DRAWN C. LOOSE DATE 11-14	CHECKED M. BUTLER DATE 11-14	APPROVED DATE	REFERENCE DRAWINGS NUMBER DESCRIPTION	REVISIONS DATE BY DESCRIPTION	WASHINGTON METROPOLITAN AREA TRANSIT AUTHORITY DEPARTMENT OF TRANSIT INFRASTRUCTURE AND ENGINEERING SERVICES OFFICE OF INFRASTRUCTURE RENEWAL PROGRAM SUBMITTED PROJECT MANAGER APPROVED	15-NEPP-01 IN - FLOOR DUCT INSPECTIONS E10 GREENBELT EXISTING/PROPOSED DUCT & CONDUIT ROUTE SCALE: NOT TO SCALE DRAWING NO.: E10-E-100 XXX
---------------------------------------	------------------------------------	---------------------------------------	------------------	--	----------------------------------	--	--

REVISIONS
DATE APPROVED
DATE



Split NEMA4x Junction Box, for Main & Em. Power

1-1/2" RGS To Panel(s)
8" - 12" AFF Typical at all 3 locations
90° Vertical Elbow

Installation Detail at Δ locations where double power duct ends at the wall

Incoming UF Power Duct (#2 & #4)
S.O.G.

224JR w/ partition & handhole
#2 & #4 Duct

1-1/2" RGS conduit to EM Power Panel w/ pull string

1-1/2" RGS conduit to AFC panel

#2a - 1-1/2" RGS conduit to AFC Panel

#2 - 1-1/2" RGS cored through the wall and run to AFC Panel FF w/ pull string for future use.

Split NEMA4x box to accommodate main and Em power feeds (typ of 2)

#1 - Pair of New UF Power Ducts; (1)#4 Main Power & (1)#2 Em Power w/ (2) 224JR Junction boxes w/ partitions & handholds.

#3 - New #4 UF Comm Duct w/ (10) 14JR Junction boxes & handholds

#4 - Pair of New UF Power Duct; (1)#4 Main Power & (1)#2 Em Power w/ (10) 224JR Junction boxes w/ partitions & handholds

#2a - 1-1/2" RGS conduit installed high to the ceiling w/ existing conduit runs

#2a - RGS dropping down to a NEMA4x junction box set immediately above the vender; flex from box into vender.

#3a - New #4 UF Comm Duct w/ (2) 14JR Junction boxes & handholds

Incoming #4 UF COMM Duct
90° vertical Elbow
#4 Comm Duct
Duct End cap
8" - 12" (Typ)

MEZZANINE NO. 80

NO.	DATE	DESCRIPTION	BY	CHKD
1	03/14/20	ISSUED FOR PERMITS	JL	AK
2	03/24/20	REVISED FOR COMMENTS	JL	AK
3	04/08/20	REVISED FOR COMMENTS	JL	AK
4	04/15/20	REVISED FOR COMMENTS	JL	AK
5	04/22/20	REVISED FOR COMMENTS	JL	AK
6	05/05/20	REVISED FOR COMMENTS	JL	AK
7	05/12/20	REVISED FOR COMMENTS	JL	AK
8	05/19/20	REVISED FOR COMMENTS	JL	AK
9	05/26/20	REVISED FOR COMMENTS	JL	AK
10	06/02/20	REVISED FOR COMMENTS	JL	AK
11	06/09/20	REVISED FOR COMMENTS	JL	AK
12	06/16/20	REVISED FOR COMMENTS	JL	AK
13	06/23/20	REVISED FOR COMMENTS	JL	AK
14	06/30/20	REVISED FOR COMMENTS	JL	AK
15	07/07/20	REVISED FOR COMMENTS	JL	AK
16	07/14/20	REVISED FOR COMMENTS	JL	AK
17	07/21/20	REVISED FOR COMMENTS	JL	AK
18	07/28/20	REVISED FOR COMMENTS	JL	AK
19	08/04/20	REVISED FOR COMMENTS	JL	AK
20	08/11/20	REVISED FOR COMMENTS	JL	AK
21	08/18/20	REVISED FOR COMMENTS	JL	AK
22	08/25/20	REVISED FOR COMMENTS	JL	AK
23	09/01/20	REVISED FOR COMMENTS	JL	AK
24	09/08/20	REVISED FOR COMMENTS	JL	AK
25	09/15/20	REVISED FOR COMMENTS	JL	AK
26	09/22/20	REVISED FOR COMMENTS	JL	AK
27	09/29/20	REVISED FOR COMMENTS	JL	AK
28	10/06/20	REVISED FOR COMMENTS	JL	AK
29	10/13/20	REVISED FOR COMMENTS	JL	AK
30	10/20/20	REVISED FOR COMMENTS	JL	AK
31	10/27/20	REVISED FOR COMMENTS	JL	AK
32	11/03/20	REVISED FOR COMMENTS	JL	AK
33	11/10/20	REVISED FOR COMMENTS	JL	AK
34	11/17/20	REVISED FOR COMMENTS	JL	AK
35	11/24/20	REVISED FOR COMMENTS	JL	AK
36	12/01/20	REVISED FOR COMMENTS	JL	AK
37	12/08/20	REVISED FOR COMMENTS	JL	AK
38	12/15/20	REVISED FOR COMMENTS	JL	AK
39	12/22/20	REVISED FOR COMMENTS	JL	AK
40	12/29/20	REVISED FOR COMMENTS	JL	AK